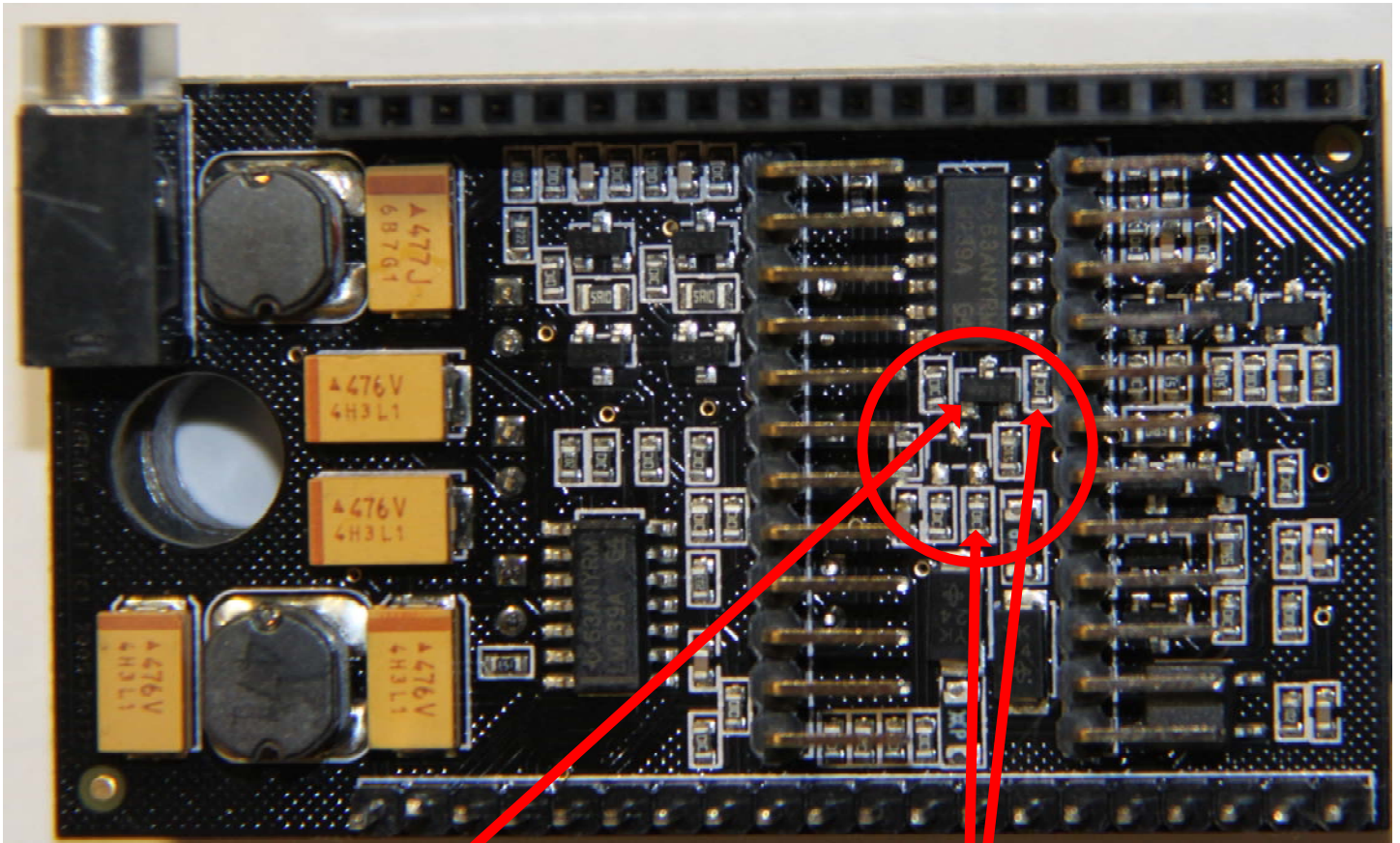


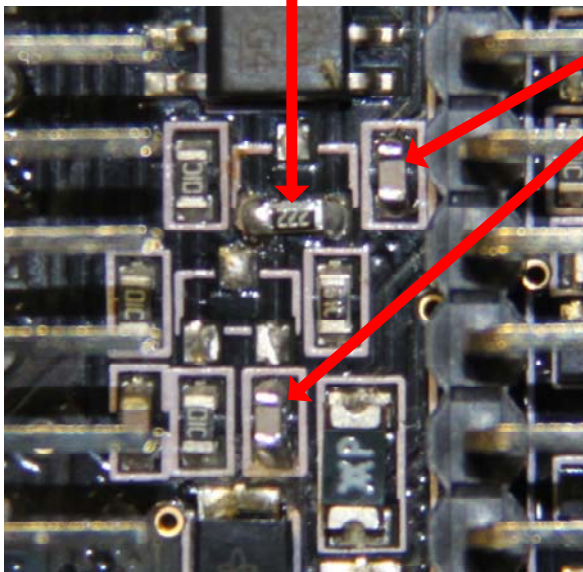
Improving CAN Input Sensitivity for CANtieCAR v2.1



Remove diode SOT23 and solder Resistor 0603 2k2
(can be used resistors from 2.2 kOhm to 5.1 kOhm)



Solder over resistors 0603 10k additional capacitors 0603 330pF
(can be used capacitors from 270 pF up to 680 pF)



ASSEMBLED

